

The Conglomerate

The Monthly Newsletter of the Reno
Gem and Mineral Society

March 2022



General Meeting

Wed. Mar 2, 7pm

Baldini's Second Floor

Board Meeting

Wed. Mar 9, 6 pm

Rock Building, 480 S. Rock,
Sparks

RGMS Mission Statement

The mission of the **Reno Gem and Mineral Society** is to create, develop, and encourage interest in the Earth Sciences and to locate and identify various material through field trips. As a **501C₍₃₎** corporation, RGMS qualifies for donation write offs of cash and materials. Donation receipts are available at the society's headquarters.

A **General Meeting**, open to the public, is held usually the first Wednesday of each month at 7 PM at Baldini's Casino, Second Floor, 865 S. Rock Blvd, Sparks, NV.

Board meetings are open to all members and are held the second Wednesday of each month at 6 PM at the Rock Building, 480 S. Rock Blvd., Sparks, NV.

Annual membership dues: student: \$25, Individual: \$35, and Family: \$50.

Conglomerate 2022

Digital edition: free to members.

Paper version, \$30 paid in advance.

Copies at the meeting \$3 each, free to guests.

Contents

Craft Fair, Obit.	2	8th Continent.....	8
FRA, Field Trip, Ed	3	Etiquette	9
Life Mem.		School.....	10
Used EQ, Smile.....	4	Calendar.....	11
Tamela JPOG		Shows.....	12
Bd. Min. Notice, Mem....	5	Officers & Dir.....	13
Long Valley Caldera	6	Renewal Form.....	15
Mineral Month.....	7	CraftFair Form.....	17

PRESIDENT'S MESSAGE

Dean Sizemore

We have reached our first field trip, excited for the Wonderstone trip coming up this month. Make sure to read the Field Trip section for details and come join us. It's always nice to get back into field trips, weather's clearing a little, at least enough for trips like this, which means soon we'll get to our first weekend trip.

Our new building fund chart was presented at February's meeting along with "Rocky" our climber. February has already seen incredible donations coming in from many sources, cash, checks and store gift cards. Prep has been going on for at least the last 6 months getting ready for this moment. We can use volunteers for labor, donations of materials along with the above-mentioned types.

Breia, our new Tech Director, has set up new emails for all board members, and they are posted in the back of this month's *Conglomerate*. We now have emails at renogms.org rather than at Gmail. This is part of the continuing website/tech improvements that are being worked on.

We are looking to expand our speakers' time at the General Meeting and reducing the time used by department heads to share information that is readily available in the *Conglomerate*. We have begun implementing our board at large members working with our greeters to show guests around the meeting, introduce them to the different directors along with the services and opportunities available. This will help cut down on announcements that are a repeat of information already in print. Like anything we try, if it works that's terrific; if it doesn't, we'll adjust going forward. We had a great speaker in February that was very informative, it was a shame to stop him because of time constraints. We are not looking to extend the meeting in case anyone's concerned that would happen.

Enjoy our first field trip, new classes and events; we look forward to seeing you at the general meeting.

Spring 2022 Artisan Craft Fair
Theresa Langhans, Coordinator

In Memoriam
Dale Sworthout
by Joanne Sworthout

I would like to invite you to participate in our upcoming Craft Fair, Spring 2022. The Fair will be held in the Reno Town Mall. The dates of the Fair will be April 8, 9, 10, 2022. The hours will be: Friday 10am-6pm; Saturday 10am-5pm; Sunday 10am-3pm.

If you would like to participate, please fill out the enclosed reservation form. We will collect the space and business license fees when you submit your reservation form. Space fees are \$65 for a single linear space (approximately a 6' foot table), plus the \$20 business license fee per vendor. If you are already in possession of a RENO business license, then you are not required to pay that \$20 fee. Additional linear table spaces (again approximately 6') are \$35 each. Remember that all of the fees, exclusive of the business license fees, go to RGMS and are one of our fund-raisers. You are supporting RGMS by participating in the Fair, while at the same time making some money for yourself!

You may cancel anytime prior to six weeks before the Fair and get reimbursed for your fees. If, although, you cancel after that time, your fees will be considered a donation to RGMS.

All member crafters of Reno Gem & Mineral Society are welcome to participate. We do have fun at this event AND it is a great way to meet other members! Non-members of RGMS may also participate, but there are additional liability requirements that they must provide prior to application for participation; which must be submitted 8 weeks prior to the event .

I hope to see you at the Craft Fair this Spring 2022!

If you are interested in participating as a vendor at this Fair, I will need to receive your reservation and payment no later than our March Board meeting, March 9, 2022. Attached to this copy of the Conglomerate is the reservation form.

Hope to see you all there in support of our Society and our Crafters!

Dale was a long-time member of the RGMS and enjoyed being the club photographer for several years until his health didn't allow him to go to every RGMS outing.

Dale was born in Hawaii and really suffered with the Nevada winters. He always said "this Hawaiian blood can't handle this Nevada cold weather."

Dale was a Navy veteran and very much a patriot. He served on the USS Midway all his career and traveled the world. The Midway is now a museum in San Diego, and I always told Dale he was a museum also!!!

He enjoyed doing the craft show with his "Ghost Towns of Nevada Photographs" and his love of black and white and color photography. Lately he shared his love of woodworking at the show also.

Dale also enjoyed fishing, and we traveled to many states with our Jet boat, enjoying the experience. One of our greatest trips was going up the Rogue River as far as you could go from the ocean to the Half Moon Bar Lodge--a once in a lifetime trip. There was never a dull moment with Dale, he kept you hopping!!

Dale and I were together for 58 years and married for 53 and retired for 22 years and enjoyed every minute. We have two daughters, two granddaughters, and soon a grandson.

Dale was an electrician by trade and worked for Western Airlines and Delta Airlines as a maintenance foreman for 34 years. He always said he had a GREAT life and wouldn't change anything, except dialysis. I wish everyone could say this. So, take a trip for Dale and enjoy the back roads of Nevada.



**Future Rockhounds of America
Steve Norman**

The club met on February 12, 2022, at the Rock Building. Ten students in attendance learned about rocks and mineral characteristics to earn a badge and work towards the CFMS Junior Achievement Awards. The program goes from 2 PM to 4 PM on March 12, April 16, and May 14, and there is some space available for students from 6 to 16. Students received polished agate from **Alan and Bobbi Metzger** to continue their mineral and rock collection. If you have a couple of dozen thumb-size minerals the students and I would be most grateful for a donation. A great big thanks go to **Tom Nichols and Virginia Keeley** who generally helped out and brought water and snacks. Students on March 12 are going to look more at the characteristics of rocks and produce their own crystals that they grow. Any Society member who wants to help teach a unit in the future, please email me at snorm11@hotmail.com. Parents who have children wanting to learn more about rocks and minerals are encouraged to email or call 775-560-4782.

Board Honors New Life Members

In January, the RGMS board voted to extend Life Membership to the following board members—



Photo: Steve Smith

Al Bolshazy, Virginia Keely, Tom Nichols and Steve Norman. These members have, over a number of years, given extraordinary measures of their time in service to RGMS.

**March Field Trip—
Wonderstone Mountain**

RGMS's first field trip of 2022 —March 5—will be led by our vice president, **Steve Smith**. We will be going to Wonderstone Mountain, about 10 miles east of Fallon on Hwy 50. You will turn north on the Grimes Point road. Two-wheel vehicles can drive to Wonderstone Mountain, but please be aware that the "road" probably has plenty of ruts from the winter, even though we haven't had much rain or snow. This is a Family Friendly event.

We will gather at the Fox Peak Station, 615 E. Fallon. Please check in by 9:00. We will depart for Wonderstone Mountain at 9:15. The trip is open to all members who have 2022 dues in place.

Please be sure to check out with the leader at the site when you leave so people don't have to go searching for you thinking you are lost.

Be sure to bring plenty of water and food if you think you will get hungry. Also, dress for the weather. And don't forget sunscreen, even at this early time of the year. Also check out **Kevin Colvin's** checklist at renogms.org/conglomerate.

Also, be aware that this is Nevada desert, and it is home to critters—snakes and scorpions among others. There is also lots of brush, so long pants and long sleeves will help protect you should you have an encounter with some sagebrush.

If it rains or snows, the trip will be cancelled.

**Education Outreach
Steve Norman**

Reno Gem and Mineral Society Education Outreach made four classroom presentations at Lemmon Valley ES fourth grade classes with 128 students. Students are encouraged to do well in school and think about pursuing a science education. Every student is given a mineral gift and information to take to their parents about the Reno Gem and Mineral Society. We get support from the Nevada Division of Minerals with stickers, pencils, and brochures that explain to parents how to keep safe in the wide and wild spaces of Nevada. I want to thank **Debbie Bush** and **Sam Knipmeyer** for their help in giving the classes and to **Alan and Bobbi Metzger** for furnishing student and teacher polished-stone mineral gifts. **Webb Varnum** presented mineral identification at Mason Valley Rock and Mineral Society.

Jackpot of Gems

Daniel Ellis

Hello there all of you rock lovers out there.

Spring is almost here so we can get ready to hunt for the one we need. Please make sure that you bring a pound or two back for a donation to the Silent Auction. Also, speaking of the Silent Auction we are looking for a few rock hounds to run that part of the show this year and many more down the road.

So if you would like to help out our show this year by playing with rocks, please get it touch with **Terry Bush** or me.

We are looking for a small team of 3 to 4 who will take on this big project.

So happy hounding and stay safe out in the desert.

Used Equipment Sale

Robyn Howard, Treasurer

Advanced notice for the "RGMS Member Used Equipment Sale".

This year we are returning to the original way of conducting our "Used Equipment" sale—meaning members will sell their own used equipment and the society asks for a minimum donation of 10% of total sales.

The date for the sale is **March 19th** from 10am to 3pm at the Rock Building. Any member wanting to sell used equipment or rocks etc. at this sale will need to sign up for a table by March 10th. Sign-up forms will be available at the March general meeting.

Members can set up their tables on Friday March 18th from 2pm to 5pm. The society will not sell used equipment that is owned by members. Members may sell their own items as outlined above, or, if a member decides to donate the equipment to the society at 100%, then the society will benefit from the sale.

Please sort through your garages/sheds/storage cabinets and gather your used equipment. Equipment must be in good working order and clean.

Amazon Smile

Robyn Howard, Treasurer

Generate Donations

Are you a regular Amazon shopper? Support us by signing up for



1/2% of all eligible purchases goes to **Reno Gem and Mineral Society, Inc.**

- ◇ no fees, no extra cost.
- ◇ Completely free to you.

When you set up an Amazon Smile account, simply specify **Reno Gem and Mineral Society, Inc.** as your charity of choice.

More Information on Plans for the "Celebration of Tamela."

Norma Wortman (Tamela's mother)

Dino has secured the Reno Gem & Mineral Society building from 10:00am - 3:00pm for February 27th, 2022. The address is 480 South Rock Boulevard, Sparks, NV, 89431. **Tamela** was an active member of this organization for many years & they have generously offered their facility for this activity.

This will be an informal gathering for her friends, a celebration—not an unhappy occasion—as we remember Tamela. Please be comfortable in moving about and talking to each other.

There will be no prepared "program" as such, but guests may speak if they wish around 11:00. There will be some of her jewelry and other samples of the hobbies she liked, such as sewing and making costumes. Also there will be many photos on a large screen. Light refreshments will be provided.

If there is a problem, please call me at 626-2345, or of course by email: renoginger@att.net.

Board Meeting Notes
Sue Webb, Editor

According to the wishes of the Board of Directors, the minutes of the monthly board meetings will be published only after those minutes have been approved by the board. Thus, the minutes of the February board meeting will be published in the April newsletter, assuming the board approves them at the March 9 board meeting. So, no board minutes this month. Minutes of the January board meeting were published in the newsletter of the month following (February), a practice that has been changed as explained above.

Membership
Janet Longueira, Director

Currently we have 228 memberships and 403 members. Remember that it is essential we receive your membership dues in order for you to attend field trips, take classes, and receive the Conglomerate. Complete the application attached and send it in. It can also be obtained from the website, [Membership - Reno Gem & Mineral Society \(renogms.org\)](http://Membership - Reno Gem & Mineral Society (renogms.org)).

We want to welcome back those who have renewed their membership, and we also welcome all of the new members who have joined us recently:

- Sean & Kelli Auquist
- Michael & Wendy Bonnett
- Sharon Boucher
- Kim Bowman (TMCC)
- Kim Brown
- Hal, Brenda, & Natalie Bush
- Thomas Calhoun
- Bertrum Carroll
- Pete & Stephanie Casillas (TMCC)
- Rick Collins
- Horton Dillon
- Daniel Fergus & Elvina Darmawan

- Alana DuffyBrent Ford
- Cindy Gallimore
- Thaleia Georgiades
- Dino Germano
- Abby, Cypress, Karson, Cheyenne, & Axell Jaquez
- Barbara JaquezToni, Karissa, Drake, & Trenton Jones & Jamie Greenland
- Ken Kapperman
- Jeff & Lesly Lage & Nick & Gina Hasler
- Tyler Lightcap
- Kevin Magee
- Jim McBride
- Teresa McKee
- Kirk Olsen
- Quinten Quiggle (TMCC)
- Kelly Reinbolt
- Solangel Richards
- Theresa Schirmer
- Lada Sellers (TMCC)
- Linda Soslofsky
- Lily Tizer & Eugene Curtis Hill
- Leslie Whorff
- Bill Wilson
- Christy Young

March Meeting Announcement
Steve Smith, VP

Please join us at Baldini's casino for our next general meeting March 2th at 7pm.

RGMS member **Lori Peterson** will share with us her extensive knowledge of Agates.

Our door prize theme this month will be Green for St. Patrick's day. Green slabs, green cabs, green rough minerals and jewelry.

We will also hear about our Classroom Expansion fund raising efforts.

I look forward to seeing you there.

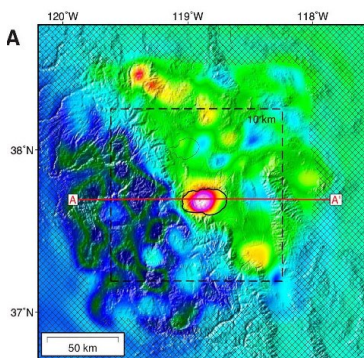
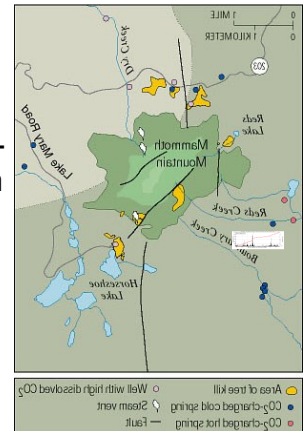
Long Valley, CA Caldera

D. W. Webb Varnum

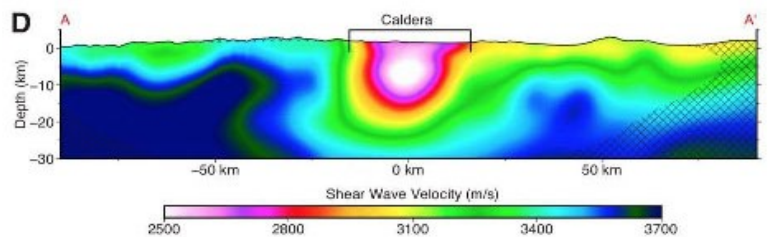
This caldera is known as California's Yellowstone. Why is it here? Because we live near the borders of two tectonic plates, the Continental plate and the Pacific plate. The Pacific plate is being forced down and under the Continental plate, causing great heat. Some comparisons:

	Long Valley	Yellowstone	Mt. St. Helens
Last event	76,000 years ago	64,000 years ago	42 years ago
Size	20 x 11 miles	35 x 34 miles	1.2 x 1.9 miles
Depth	3000 feet	Several thousand feet	2084 feet
Ejection	140 cubic miles	240 cubic miles	29 cubic miles
Dust cloud	8 miles	?	6-8 miles

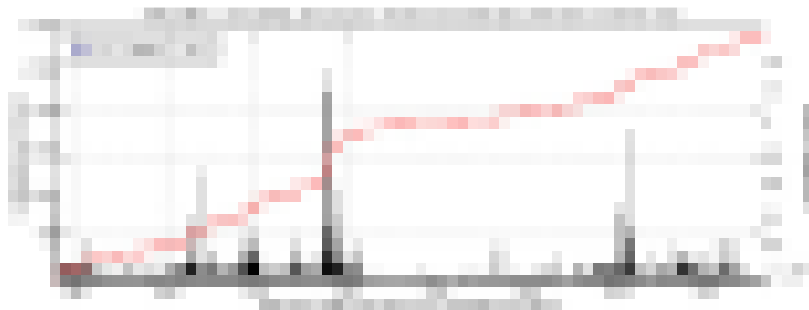
There are other volcanoes in the ring of fire along the west coast of the U.S.A. For example, Mt Lassen erupted in 1914, 1921, and 2014. And last the giant Mt Rainier was active last year—2021. Other volcanoes include Crater Lake (Mt. Mazama). It seems that Long Valley is **waking up!** How do we know? There is an increase in geothermal activity. There is new smoke and carbon dioxide venting killing trees. Worse yet, the CO2 is heavier than air and flows downhill. It can fill valleys killing all animal life, including human life.



More alarming is the resurgent dome near Bishop. It has been pushing up noticeably the last few years. In 2018 the Long Valley deformation was measured by the earth's magnetic field, proving the presence of a large magma chamber estimated to contain 290 cubic miles of melt. It is an indication that there is a large amount of liquid below the surface. An increased number of earthquake swarms is another sign. The swarms have in-

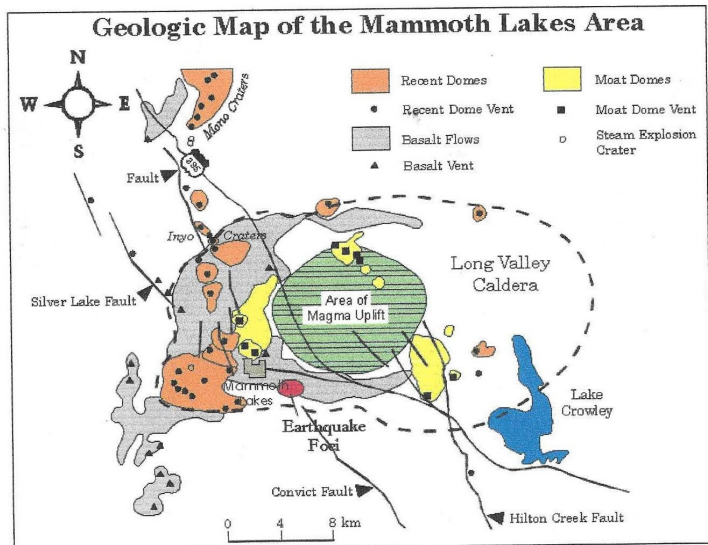


creased after a 20-year period of relative calm. The amplitude of these quakes is usually 1 to 1.2, at a depth of 1 Km to 23 Km .



There are also several other points of interest in the area. There are two volcanic cones in Mono Lake—an intrusive rhyolite dome called Negit Island which erupted 300 years ago, and Paoha island , an intrusive basaltic dome which erupted 13300 years ago. There is also one to

Continued next page



Source: Web Site <<http://www.intranet.csupomona.edu/~geology/docs/sierra.html>>

to the south.

Other dangers of a volcanic eruption include lava temperatures close to 2000 degrees, . pyroclastic flows containing dust and gasses reaching 800 degrees and speeds to 500 mph,. With snow-covered volcanoes, the danger includes lahars , a flow of water and ash that will cover everything, similar to a giant mud flow. It will destroy everything in its path .

“Here is how the USGS puts it: “Increased volcanic activity in Long Valley area since 1980 increases the chance of an eruption occurring in the near future, but scientists still lack adequate data to reliably calculate by how much. Volcanic unrest in some other large volcanic systems has persisted for decades, even centuries,

without leading to an eruption. But since volcanic unrest can escalate to an eruption quickly --in a few days, or less--USGS scientists are monitoring the activity closely.”

Source: all drawings and data taken from USGS web sites

Mineral of the Month: Sillimanite
D. W. Webb Varnum

Sillimanite-- $Al_2(SiO_4)O$ —is a semi-precious stone that is named after an nineteenth century Yale professor of geology and chemistry, Benjamin Silliman. It is typically clear, or blue-green, but can vary to green or gray. It has a sub-vitreous greasy or silky luster. Occasionally fibrous, It streaks white or clear, and has a Mohs hardness of 6.5-7.5 and a specific gravity of 3.23-3.27. The crystal system is orthorhombic. Found in Chester, Connecticut In the US, significant deposits also exist in Myanmar and the area of Tamil Nadu in India. A polymorph of andalusite and kyanite, sillimanite is not mined as an industrial mineral. Rather, it occurs “in high-grade metamorphic schists and gneisses, sometimes in pegmatites. Probably most gem sillimanite is found in gem gravels.” It can be purchased as a semi-precious stone on the Internet. According to Gemdat.org, it is “one of the most difficult gemstones to fashion.”

Sources: personal knowledge, Mindat.org, and gemdat.org. Images: gemdat.org



An 8th Continent? Matthew Lybanon, Editor, MAGS Rockhound News, 11-12/2021

About 3,500 feet under the south Pacific sits a piece of land adjacent to New Zealand 2 million square miles in size—about half as big as Australia. But scientists can't agree on whether this submerged land mass—a collection of submerged chunks of crust called Zealandia (or the Maori name Te Riu-a-Māui) that broke off an ancient supercontinent called Gondwana about 85 million years ago—is a continent or not. A team of geologists declared it one in 2017, but not all researchers are convinced.

Nick Mortimer, a geologist from New Zealand's GNS Science who led the 2017 group, explains that a continent should have clearly defined boundaries, occupy an area greater than 1 million square kilometers, be elevated above the surrounding ocean crust, and have a continental crust thicker than that oceanic crust.

Zealandia meets all those stipulations. The problem, however, was that until recently, the oldest crust and rock ever sampled from Zealandia was just 500 million years old, whereas all the other continents contain crust that is 1 billion years old or more. But a recent study found that part of the submerged continent is twice as old as geologists previously thought, which could boost Mortimer's argument.

Tiny mineral grains taken from granite rocks have led to a potential breakthrough in ancient continental reconstructions. The geologists behind the recent research (published in *Geology*) looked at 169 chunks of Zealandia granite, which were found under New Zealand's South and Stewart Islands.

Granite forms when magma crystallizes deep within the Earth's crust. The granites were brought to the surface by uplift of the Zealandia continent in response to earthquake activity along a plate boundary over millions of years. By extracting microscopic crystals from the granite, the team was able to determine both the age of the crystals themselves and of the crust in which they formed. The results showed that crust was once part of another supercontinent known as Rodinia, which formed between 1.3 billion and 900 million years ago—far earlier than 500 million years ago.

Dr Rose Turnbull (also of GNS Science, and one of the authors of the *Geology* article) says that a key finding in this study was the unique isotopic signature measured in microscopic grains of zircon ($ZrSiO_4$), a mineral that is found in all granites. The isotopic composition of zircon is used in geology to understand deep time and can be used to reveal what the Earth's crust looked like both at and deep below the surface.

"To use a human analogy, all of today's eight continents have older ancestors such as Gondwana, Laurasia, and Pangea.

"The new study has enabled scientists to place Zealandia in the 'family tree' of continents descended from Rodinia."

With this new information, Zealandia may yet turn out to be a 'missing link' between South China, Australia, and North America—and this opens up the position of South China and Zealandia within Rodinia to new international scrutiny, Dr Turnbull says.

References: Ringwood, M.F., et al., 2021, Phanero-zoic record of mantle-dominated arc magmatic surges in the Zealandia Cordillera: *Geology*, v. 49, p. 1230– 1234, <https://doi.org/10.1130/G48916.1>

Mortimer, N., et al., 2017, Zealandia: Earth's Hidden Continent: *GSA TO-DAY*, v. 27(3), p. 27-35, <https://doi.org/10.1130/GSATG321A.1>

Good Field Trip Etiquette

Paleofootnotes vol. 17, number 1, January, 2022

1. Arrive on time or early. At the prescribed meeting time (often 8AM) you should be out of your car standing with the field trip leader, signed in and ready to hear the day's schedule, directions and helpful pointers.
2. Do your homework. Use one of the online mapping programs to determine travel time and directions from your home the day before. Take the map with you and leave at least 15-30 minutes early. This is critical when . . . the first stop is a meeting-point, not the collecting site. The field trip leader will not wait more than 15 minutes beyond the scheduled time.
3. Make sure you have the field trip leader's phone number. Their number will appear in the field trip notice. Bring a copy of the notice from the newsletter or e-mail blast so you have the information. That is the best way to find the group if you do get delayed or lost. But do not count on it. Some . . . remote sites have poor cell reception. We have no way to guarantee you will get there if you miss the meeting spot.
4. The first stop is not breakfast. Please do not expect the rest of the group to wait while you order food or take care of business. If you need to do that, arrive 30 minutes early and then be ready to go at 8:00AM sharp!
5. The field trip leader sets the schedule. Gather near the leader at the beginning of every trip and listen carefully. The leader will describe where and when things will happen. That will include directions, plans for breaks and everything else you need to know about how the day will unfold. If you are not sure about directions or the schedule speak directly with the field trip leader. Do not count on hearsay.
6. Do not ask the entire group to stop for unscheduled breaks. If you need to take a break during the day, do it after you know where the collecting site is located. The field trip leader [may] schedule a break around lunch [time], but [maybe no others].. Follow the group to the site and then circle back for food or facilities. This is why we suggest bringing your own food and beverages. Also being prepared with TP, or whatever else, for "emergencies."
7. Sign in and don't forget to report to the leader when you leave. This is not critical, but he or she will greatly appreciate those two things. Having everyone's name let's him know how well attended the trip was and we like to list everyone in the follow up reports. Secondly, getting a chance to hear and see what you found that day and being able to keep track of who is on site at the very end is just a good thing. [And the leader won't have to go looking for you.]
8. Be prepared. Make sure you have the materials you need to collect safely. In particular, water, hat, sunscreen and food.
9. Don't crowd the next guy. Please be courteous of your fellow collectors' space. If someone says "Hey I found a good one!" don't come rushing over and crowd into their collecting zone. Let them offer to share the space. You can ask them where they found it and then move off to one side or the other, but don't just plop down next to them.
10. Be safe. If someone is working an area on a slope, do you best not to pass above them. If you need to do so, please let them know you are passing and do your best not to send any debris down on top of them. If someone is working above you and you must pass below, please alert them for the same reasons. Generally speaking, if someone is working a spot, respect that they "own" that area and your passage through or around that location should only be done with their permission and/or invitation

[Editor's note: some deletions and additions have been made to make the information appropriate for RGMS trips.]

School Report

Julie hilsabeck, School Director

Look closely – there are class times and limit changes below! **Beginning in March**, Beginning Lapidary, Introduction to Tumbling and Beginning Silver Fabrication will only be registered for via e-mail. An announcement email will be sent to all members on Tuesday, February 22nd, between 6:00 pm and 10:00 pm. Your first class occurs before the General Meeting! If you want to enroll in one of the classes listed above, respond to the email (rgms.schooldirector@gmail.com) swiftly as the classes fill quickly. Payment will be collected at the first class meeting.

Mondays: **Open House**, 11:00 am to 9:00 pm, \$7.50/hour

Tuesdays: Mandatory **safety** class occurs 30 minutes prior to start times for the first Beginning Lapidary class.

Beginning Lapidary, 1:00 pm to 3:00 pm limited to 4 students, cost is \$60.00 for the month

Introduction to Slab Saw Use, 1:30 pm to 3:30 pm, limited to 4 students, cost is \$60.00 for the month

Beginning Lapidary, 6:30 pm to 8:30 pm, limited to 6 students, cost is \$60.00 for the month.

Beginning Silver Fabrication, 6:00pm to 9:00 pm, limited to 8 students, cost is \$90.00 for the month, **class moves to the 4th Wednesday evening**.

Wednesdays: **Introduction to Tumbling**, 1:00 pm to 3:00 pm, limited to 4 students, cost is \$60.00 for the month and includes all supplies

Beginning Silver Fabrication, 6:00 pm to 9:00 pm on **only the 4th Wednesday evening**.

Thursdays: **Advanced Silver Fabrication**, 6:00 pm to 9:00 pm, no limit on students, Cost is \$7.50/ hour or \$90.00 for the month.

Casting, 6:00 pm to 9:00 pm, limited to 6 students, Cost is \$90.00 for the month

Fridays: **Introduction to Stabilizing**: This is a two day class. The first part is on Friday evening from 6:00 pm to 9:00 pm. The second part is on Saturday morning from 9:00 am to 2:00 pm. The class is limited to 4 students, Cost is \$60.00 for one class. The first will occur on March 11th and 12th. The second class will occur on the 25th and 26th.

Saturdays: **Wax Carving for Casting**, 9:00 am to 4:00 pm, limited to 6 students, Cost is \$120.00. Class continues for 2 weekends, March the 5th, 6th, 12th, and 13th.

Sundays: **Bead Weaving** with Sue Webb, only on the 20th, 10:00 am to 2:00 pm., limited to 10 students, cost is \$20.00. Project TBA at General Meeting. Suitable for beginners.

March 2022

Sun	Mon	Tue	Wed	Thu	Fri	Sat
	Feb. 28 Open House 11am -9 pm	1 Safety 12:30-1 6-6:30 Lapidary 1-3pm; 6;30- 8:30 Slab saw 1:30-3:30 Beg. Silver Fabrication 6-9pm	2 General Meeting 7pm Baldini's Tumbling 1pm-3pm	3 Adv. Silver Fabrication 6-9pm Casting 6-9pmx		5 Wax Carving for Casting 9an-4pm Field Trip Wonderstone Mountain
6 Wax Carving for Casting 9an-4pm	7 Open House 11am -9 pm	8 Lapidary 1-3pm; 6;30- 8:30 Slab saw 1:30-3:30 Beg. Silver Fabrication 6-9pm	9 Board Meeting 6 pm 480 S. Rock Tumbling 1pm-3pm	10 Adv. Silver Fabrication 6-9pm Casting 6-9pmx	11 Stabilizing 6pm-9pm	12 FRA 2pm-4pm Stabilizing 9m-2pm Wax Carving for Casting 9an-4pm
13 Wax Carving for Casting 9an-4pm	14 Open House 11am -9 pm	15 Lapidary 1-3pm 6:30-8:30 Slab saw 1:30-3:30 Beg. Silver Fabrication 6-9pm	16 Tumbling 1pm-3pm	17 Adv. Silver Fabrication 6-9pm Casting 6-9pmx	18	19
20 Bead Weaving 10am-2pm	21 Open House 11am -9 pm.	22 Lapidary 1-3pm 6:30-8:30 Slab saw 1:30-3:30	23 Tumbling 1pm-3pm Beg. Silver Fabrication 6-9pm	24 Adv. Silver Fabrication 6-9pm Casting 6-9pmx	25 Stabilizing 6pm-9pm	26 Stabilizing 9am-2pm
27	28 Open House 11am- 9pm					

CFMS & AFMS Shows, 2022

Covid is still not over! Please check to be sure the show is happening.

2022 Shows**March 5-6, 2022 – Ventura, CA**

Ventura Gem and Mineral Society
Ventura County Fairgrounds, 10 W. Harbor Blvd., Website: <http://www.vgms.org>

March 5-6, 2022 – Newark, CA

Gem and Mineral Society of Castro Valley
Newark Pavilion, 6530 Thornton Ave., Newark, CA
Contact: info@mgscv.org Website: <http://mgscv.org>

March 11-13, 2022 – Victorville, CA

Victor Valley Gem and Mineral Club
46th Annual Stoddard Wells Rockhound Tailgate
.Contact: smaquilter12@gmail.com

March 12-13, 2022 – Turlock, CA

Mother Lode Mineral Society
Stanislaus Fairgrounds, 900 N. Broadway in Turlock, CA .
Contact: Bud & Terry McMillin (209) 484-4416, terry.mcmillin@yahoo.com
Website: <http://www.turlockgemshow.com>

March 11-13, 2022 – Victorville, CA

Victor Valley Gem and Mineral Club
46th Annual Stoddard Wells Rockhound Tailgate
Contact: smaquilter12@gmail.com

March 19-20, 2022, Lemoore, CA

Lemoore Gem & Mineral Club
Lemoore Trinity Association Hall, 470 Champion St., Contact: (559) 362-8904, dmorrell321@gmail.com
Website: <http://lemooregemandmineralclub.org>

March 25-27, 2022, Clovis, CA

Fresno Gem & Mineral Society
748 Rodeo Dr., Clovis, CA 93612
[Central Valley Gem and Mineral Show | Facebook](#)

April 1-3, 2022, Vista CA

Vista Gem and Mineral Society
Antique Gas and Steam Engine Museum, 2040 N. Santa Fe Ave., Contact: info@vistarocks.org
Website: <https://vistarocks.org>

April 9-10, 2022 – Mariposa

Mariposa Gem and Mineral Club
Mariposa County Fairgrounds, 5005 Fairgrounds Road,
Contact: mgmc@sti.net
Website: <http://mariposagemclub.org>

April 9-10, 2022, Thousand Oaks, CA

Canejo Gem and Mineral Club Borchard Park,
190 N. Reino Rd. Thousand Oaks, CA
Contact: gguttman8@gmail.com Website: <https://cgamc.org>

April 30 – May 1, 2022 – Anaheim, CA

Searchers Gem & Mineral Society
Website: <https://searchersrocks.org>

May 6-7-8, 2022 – Lancaster, CA

CFMS Gems, Minerals, Fossils & Jewelry Show
Antelope Valley Fairgrounds, 2551 W Avenue H,
Lancaster, CA 93536 Contact: Bob Backus (661)
526-3564, email: lbbackus@aol.com; Susan
Chaisson-Walblom (661) 406-0143, email: slchaisson@yahoo.com

June 11-12, 2022 —Escondido, CA

Palomar Gem and Mineral Club
California Center for the Arts,
340 N. Escondido, Contact: (425) 281-6218, tonifloyd41615@gmail.com Website: <http://palomargem.org>

August 20-21, 2022 – Arcadia, CA

Pasadena Lapidary Society, Arcadia Masonic Center, 50 W. Duarte Rd., Arcadia Contact: Ellen Ferrell 1-727-512-0381
Email: ellenbf2007@aol.com
Website: <https://www.pasadenalapidary.org>

September 10-11, 2022, Reno, NV

The Reno Gem & Mineral Society, Inc.
Reno Convention Center, 4390 S. Virginia, Reno, NV 89502 Contact: sailondan55@aol.com
Website: <http://www.renogms.org>

October 13-16 AFMS New Orleans, LA Gem & Mineral Society of LA. Location TBA.



Officers

President:	Dean Sizemore	President@renogms.org
Vice President:	Steve Smith	Vicepresident@renogms.org
Secretary:	Steve Norman	secretary@renogms.org
Asst. Secretary:	Available	assistantsecretary@renogms.org
Treasurer:	Robyn Howard	treasurer@renogms.org
Asst. Treasurer:	Ana John	assistanttreasurer@renogms.org
Past President	Tom Nichols	pastpresident@renogms.org

Board of Directors at Large

Lori Connel	Available	Albie Longueira
Eric Fendelander		Hilary Loupee
Rob Kendrick		Webb Varnum

Comission Directors

ALAA rep	Al Bolshazy	alaa@renogms.org
Bulletin Editor:	Sue Webb	conglomerate@renogms.org
Ass't Editor	Karen Boldi	same as editor +2 ?
CFMS & AFMS	Jennifer Rhodes	cfms@renogms.org
Ass't CFMS/AFMS	Sue Webb	same as cfms/afms +2 ?
Craft Fairs	Theresa Langhans	craftfair@renogms.org
Facility	Available	maintenance@renogms.org
Facebook	Sven-Erik Sander	socialmedia@renogms.org
Field Trips:	Eric Fendelander et al	fieldtrip@renogms.org
Historian:	Philipp Weirauch	historian@renogms.org
Instagram & Twitter	Available	
Jackpot of Gems	Daniel Ellis	jpog@renogms.org
Ass't JPOG	Steve Norman	same as jpog +2 ?
Librarian	April Young	library@renogms.org
Asst. Librarians:	Available	Same as librarian +2 ?
LLC Manager	Linda Johnston	llc@renogms.org
Membership:	Janet Longueira	membership@renogms.org
Photographer:	Steve Smith	photographer@renogms.org
Public Relations:	Carol Ennis	publicity@renogms.org
School:	Julie Hilsabeck	school@renogms.org
Security	Carl Olson	security@renogms.org
Shop:	Available	
Social:	Denise Sizemore	social@renogms.org
Sunshine:	Available	sunshine@renogms.org
Tech Director	Breia Sanders	tech@renogms.org
Volunteers	Terry Bush	volunteers@renogms.org