



# The Conglomerate

The Monthly Newsletter of the Reno Gem and Mineral Society, Inc.

## November 2023

### General Meeting

Wed. November 1, 7 PM

Baldini's Casino, Second Floor

### Board Meeting

Wed. November 8, 6 pm

Rock Building, 480 S. Rock,

Sparks

### RGMS Mission Statement

The **mission** of the **Reno Gem and Mineral Society** is to create, develop, and encourage interest in the Earth Sciences and to locate and identify various material through field trips. As a **501C(3)** corporation, RGMS qualifies for donation write offs of cash and materials. Donation receipts are available at the society's headquarters.

A **General Meeting**, open to the public, is held the first Wednesday of each month at 7 PM at Baldini's Casino, Second Floor, 865 S. Rock Blvd, Sparks, NV.

**Board meetings** are open to all members and are held the second Wednesday of each month at 6 PM at the Rock Building, 480 S. Rock Blvd., Sparks, NV.

**Annual membership** dues: student: \$25, Individual: \$35, and Family: \$50.

### Contents

Ed Out Fair SunOffi 2	Ethics.....10
Membership .....-3-4.	School.....11
Field Trip.....5-6	Showa.....12
Shims..... 6-7	Christmas Party..13
Board.....7-8	Officers.....14
Sparks Lib.....8	Volunteers .....15
Kids Corner9.....9	

## President's Message

Dean Sizemore

Happy November: the end of the year is almost here already—astonishing! I want to start by thanking all the amazing members of this organization that I've seen do so many nice things. I appreciated the visitors, cards, and well wishes while I was under during mid-October. Doing well now and looking forward to the holidays, especially our Christmas party.

We had an amazing field trip year; I want to thank the staff under **Hilary Loupee** our Field Trip Director that did a great job this year leading our trips. It was a very successful year, and I know she's looking for an Assistant for next year to help lead trips. I'm very proud of our members who have stepped up to help each other on these trips. Thank you to all of you.

I wanted to remind everyone about the resources available to you-- our website [renogms.org](http://renogms.org) contains copies of the conglomerate, monthly calendars, class schedule and so on all available there. Our amazing newsletter is available on line to all members every month; make sure to read your *Conglomerate*. You can also email all the Officers; our emails are in the back of the Conglomerate. Our monthly meeting is the first Wednesday of the month at 7PM at Baldini's upstairs.

At the November meeting we will be taking any nominations for next year's Officers and voting. It's important for you to be there and to make your vote count.

Denise and I wish your families a Happy Thanksgiving and look forward to seeing you at the General Meeting.

**Educational Outreach:  
2022-2023 Summary**  
*Steve Norman, Facilitator*

It was a busy year for the Education Outreach team. **Debbie Bush** and **Steve Norman** went to schools to show students the rocks and minerals they use daily. Part of the students' fun is receiving their own rock to take home and telling their parents about the presentation. All rock gifts are labeled with the name of the mineral and naming the Reno Gem & Mineral Society for the gift. There is a need for more rocks and minerals to give away to students with anything small and shiny. If you would like to donate, please see Debbie or Steve. **Alan** and **Bobbi Metzger** have made it a habit to donate tumbled rocks for students and teachers, which is greatly appreciated. We also get support from the Nevada Division of Mines, which provides brochures explaining to parents why staying out of abandoned mines is critical.

Last school year, from September 2022 to September 2023, the Outreach team visited 42 schools or organizations. There were 90 classes given to participants from 6 to 86, mostly kindergarten to sixth grade, reaching 1,956 students who learned about the rock cycle and why science is an incredible focus to study for a career.

**Officers' Reports**

General Meeting and Board minutes are posted on the bulletin board at the Rock Building monthly. Treasurer's reports are available to any member on request. **Steve Norman**, Secretary; **Janet Longueira**, Treasurer

**November Program**  
*Steven Smith, Vice President*

Baldini's casino, November 1st at 7pm will be our next general meeting. I am pleased to announce our speaker will be Nevada photographer **Mark Vollmer**. If you like photography this is the meeting not to miss.

Following the speaker, we will have our annual election of officers. We will also have our wonderful door prize drawing as usual.

I hope to see you at our next meeting.

**Fall Craft Fair**  
*Theresa Langhans, Coordinator*

Time is here for our semi-annual Artisan Craft Fair. I hope that you will visit us, do a little shopping, and support our RGMS members who are the artists selling their product at this show. The show at Reno Town Mall (Burlington Coat Factory):

Friday	November 10	10am-6pm
Saturday	November 11	10am-5pm
Sunday	November 12	10am-3pm

We will have 20 vendors selling everything from slabs, rough rock, finished jewelry, crystals, wood art, professional award-winning photography and so much more than we can list here. Shop now for unique items for your Christmas gift items; shop for yourself.

Please assist with advertising and forward the information to friends, neighbors, work, etc.

Hope to see you there!

**Sunshine Report**  
*Joanne Sworthout*

If you have a situation for which you could use some support from your RGMS friends, or if you know of someone who could, please get in touch with **Joanne** at [sunshine@renogms.org](mailto:sunshine@renogms.org).

**Membership**  
**Lynda Traves, Director**

Wow! It is mid-October as I write this and it will be November when the newsletter is published. How the time has flown. Mark and I are going/went to what we call our Oregon bug out spot October 21. A belated 20 year anniversary weekend away and Halloween birthday for Mark. I love Halloween—it is my favorite holiday.

Memberships were 1/2 price until October 31, 2023; at which time November and December dues return to full price and covers members fees through 2024. Thus, July-October Family is \$25; Individual is \$18; Student \$13; and November - December \$50 for Family, \$35 for individual, and \$25 for student memberships. If you have paid the reduced dues (July-Oct), then you will be required to renew your membership at the annual membership rates.

We currently have 575 memberships representing 1019 members. And that includes approximately 55 school aged children, some of whom attend the kids rock classes. (kids can start any time). The classes offer crafts where kids can identify rocks and paint rocks. From attending these classes with our grandchildren, we observed that they enjoy coloring rocks to make them be something else. Look for an email blast indicating when the next class is.

Welcome to the following new members for the past month (16 of September to 15 of October):

- |                                   |   |
|-----------------------------------|---|
| Al Bedford                        | Jeff Applin                                   |
| AnnaLea Harris                    | Jerene Wait                                   |
| Antonio Smith                     | John and Dawn Fidaleo                         |
| Bill Barbie                       | John Briggu                                   |
| Bob Rush and Maci Collins         | Kalika, Russell, Kaki, Alli, and Chloe Newell |
| Christine and Mike Moore          | Kerri, Lotte, and Lina Kinoshita              |
| Chuck Hume and Cindy Kelley       | Leon Werner                                   |
| Daniel Halvorson                  | Leslie Sexton                                 |
| Darrel "Bruce" King               | Lori Rogers                                   |
| Delores Lara                      | Lucia Almeraz                                 |
| Denise Citelli                    | Lurana Cancilla                               |
| Gail Mirkovich and Deborah Taylor | Malinda Humphrey                              |
| Gayle and Brett Dedrick           | Margie Franzen-Weiss                          |
| Heather Eckart                    | Marlene Power and Greg Nayarra                |
| Jack Taylor                       | Mary Firpo                                    |

Continued next page

Matt Scully

Michael and Natasha Kock

Molly Moore

Morgan Belli

Natalie Speak

Nicole French

Norman Sanders

Richard and Julie Shupe

Roberta Jones

Robyn Cightner

Roger and Lupe Severson

Sarah Shorb

Shiloh McGanghe Sarah Shorb

Stephen and Sharon Provost

Tamera Muckel

Teresa Watson

Tim and Karl Tornstrom and Patricia Segura

Virginia Eckroat

Wendy Felling

Will Wright

William (Bill) Wilson

Apologies for any errors and omissions for the names above. Please advise asap any corrections or omissions so I may make the correction. Thank you.

To pay your membership online or download the membership form:

<https://renogms.org/membership-2/> If you have any questions, please email me at [membership@renogms.org](mailto:membership@renogms.org)

Membership Dues are: Individual: \$35; Family: \$50; and Student: \$25.



Photo: Lynda Traves



**Field Trip Update**  
**Hilary Loupee**

That’s a wrap on field trips for the year. We did a lot! Thank you to **Jim Welker** for leading the final trip to the Coaldale area. Our Land Rover decided to die that week, so I missed out! I heard from several members how good it was and I’m really sad I did miss it. My last field trip was to Austin. We found some great blue agate geodes. The rain this year really helped uncover things. I did more digging than usual and found that the geodes are plentiful and bigger under the surface. It was harder work, but I found a couple of monsters that I can’t wait to cut.



We had a great potluck at camp with a couple of super-charged kids that were making us all laugh. **Wendy Kazas** brought a German chocolate cake for **Dennis’** birthday. Since I didn’t have my camper on this trip, I stayed at the Paradise Ranch Castle, right in the same valley. A couple of



the other members also stayed there. It was something else playing billiards in a dungeon after a day of rockhounding. We were all teasing each other about moving the dolls and mannequins around to scare each other. In all honesty though, it was a beautiful bed and breakfast and I’ve never felt so rested (or clean) in the middle of a desert adventure.



We went back to the fluorite from a previous field trip on the second day. It’s just a tailings pile, but it’s a good one. I was happy filling my bucket with beautiful smaller pieces from a small hole I was digging. Dennis and Wendy discovered a giant fluorite boulder and spent the day



digging it out. Once they got around it, we all helped strap it and pull it out. In the end, it required tying it to their truck and pulling it out and then rolling it onto their truck bed. It was a real monster, probably around 400 lbs--definitely a great birthday present for Dennis.

As many of you have heard, there was an accident on the road after the field trip. Thankfully, it happened where there was just enough cell signal to call for help, and other RGMS members were able to assist them. Only the wife was injured, but she is doing well and will make a full recovery. She is already talking about next year’s

Continued next page

Photos: Hilary Loupee



Mt. Airy geodes cut by Nick

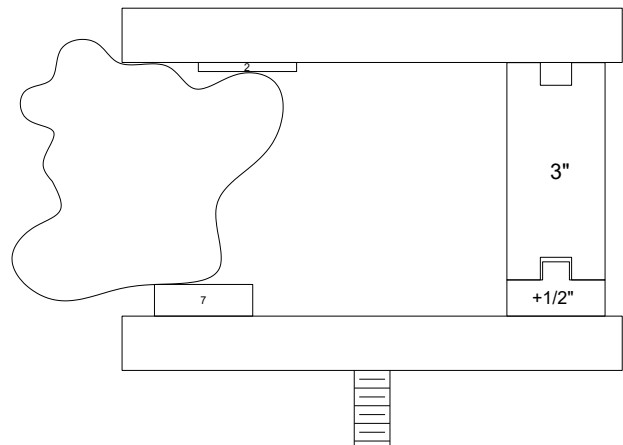
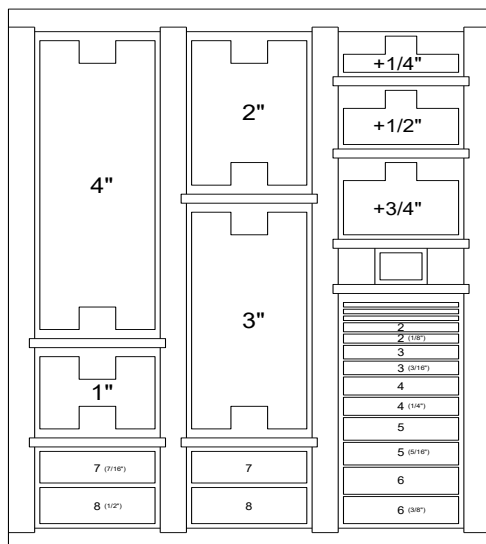
Since field trips are over until March, I'd like you guys to show me what you've been doing with all of your field trip finds! Send photos to [fieldtrip@renogms.org](mailto:fieldtrip@renogms.org). Also share them on our Facebook page! If you haven't been doing much, the colder months are the perfect time to turn your findings into treasures. RGMS has lots of classes for cutting, tumbling, cabbing, and silver smithing. You can also purchase your own equipment for home use. Feel free to email me if you have questions.

I have a lot of experience tumbling and have some great tricks for difficult stones like the Apache tears we found in Lovelock. I personally have a Lortone Q12 rotary tumbler, a Thumler Vibe 10 vibratory tumbler, a Lortone 12" slab saw, and I'm working on getting my classic Frantom wheels going that I bought at the used equipment sale. I also have a flat lap, but so far it just makes a big mess, lol. I plan to use the winter break to organize my home rock shop and make some things for gifts. I hope to see everyone at meetings or at the shop until we get going again in the spring.

### Use of Slab Saw Spacers and Shims

Tim Steeper

I made two sets of slab saw spacers and a rack (see picture below) to help make rock set up easier in the 16" and 18" slab saws. Usually in these two saws it is necessary to put a spacer on the right-hand side of the clamp when trying to clamp something that is too small to reach the center of the clamp. Without a spacer the clamp will twist making it difficult to hold whatever you are trying to clamp securely. Previously we had to dig around in the buckets of scrap wood to find a piece of the correct width. With the spacer set it is easy to just pull out one of the 1" to 4" wide spacers, adding one of the fractional inch spacers if necessary, to get the right width. There is also a small connector piece if it is necessary to connect two spacers, for example 1" with 4" to get 5" or 2" with 4" to get 6".



Continued next page

The rack also holds shims that can be used to help position a rock in the clamp. One shim may be all you need to shift a rock slightly so the clamp will hold it. Use of a shim on opposite sides of a rock can cause the rock to rotate in the clamp to better align it for cutting in a precise location. Since the shims are made of soft pine a rock will press into them better than the oak boards that are part of the saw clamp, often allowing the rock to be held more securely. Most of the shims are labeled with their thickness in 1/16" increments to aid in finding the right shim.

The rack and spacers took some time for me to make. If you use these spacers or shims, please put them back in the storage rack so they will be easily located for use by others. Please don't just drop them into one of the buckets. I've had to dig through the buckets a few times to find all the pieces to return them to the rack.

### ***RGMS Board Meeting Minutes – September 13, 2023***

These are the summarized notes. Contact me for the full report at [secretary@renogms.org](mailto:secretary@renogms.org) or find them on the clipboard near the office on a countertop.

President: **Dean Sizemore** reminded the Board members to respect each other's opinions. Dean asked about the progress of the Nominating Committee. **Wendy Kazas** reported that she emailed to announce and ask people interested to contact her or someone on the nominating committee. A Bureau of Lands Reno area is forming a committee to discuss the Fairview area. Jim Welker has a copy, and perhaps either **Hilary Loupee** or Jim could attend to represent RGMS.

Treasurer: **Janet Longueira** reviewed the August Financial Position as of August 31, 2023, and the Financial Statement of Activity for the August 2023 income and expense report. Janet discussed the increase in insurance for anticipating a crowd of 1,200 people per day for the Jackpot of Gems Show. Jim Welker made a motion to accept the August financial report. **Julie Hilsabeck** seconded, and the motion carried.

LLC The Rock Building: Manager **Linda Johnston** reports the building is doing well. Linda has a financial audit scheduled. Linda is moving to Texas and resigning from her position. **Terry** and **Debbie Bush** have agreed to take Linda's position. **Juliet Hitchcock** continues as the tenant manager. President Sizemore thanked Linda for all the fabulous work that she had done for many years. Linda will schedule **Will Hitchcock** for a board meeting to provide an update on the building finances and nonprofit status. **Jim Welker** made a motion to accept Terry and Debbie Bush as the directors for the LLC The Rock Building. **Janet Longueira** seconded, and the motion carried.

Past President & Tech Chair: **Tom Nichols** reports work progress to the website. Ten Mailchimp emails were sent to the membership. The last three Conglomerates are on the website.

Jackpot of Gems: Director **Dan Ellis** is absent. **Stephanie Leonard** reports that 120 members signed up to help with the Show. Thirty members signed up using the online application. Each show director has a list of the volunteers for their station and contact phone numbers. Everyone who volunteers should wear a T-shirt to show visitors who is available for questions.

Continued next page



Door Prizes: **Denise Sizemore** counted 97 at the General Meeting last week. There were \$282 in donations. October's theme will be Fall orange, yellow, or red colors. December's theme is a wrapped gift. Donations are needed!

Schools/Building: **Julie Hilsabeck** has full lapidary classes for the Saturday schedule. There will be wire wrapping in October.

Membership: **Lynda Traves** reports 530 memberships, amounting to 966 members.

Field Trip/32 Auction: **Hilary Loupee** discussed the Frenchman trip with 70 people attending. Someone called about a field trip on a claimed site, but Hillary checked the BLM reports and found no active claims where RGMS was collected.

Conglomerate and AFMS/CFMS: Editor **Sue Webb** reminds members that articles are needed and are due on the 15<sup>th</sup> of the month.

Volunteer: Director **Wendy Kazas** asked for any volunteers for Board officers, including the President, Vice President, Secretary, and Treasurer. There is a need for a Security Director, Public Relations Director, and American Lands Association representative.

Sunshine: **Joanne Sworthout** reported that **Alan Felker** is progressing recovery from his illness. Joanne reported that **Tammy** and **Fred Pierce** have been under medical care. She has sent cards.

New Business: **Janet Longueira** reported a donation from **Tim Markley**, and he appreciated a tour of the building and upcoming expansion. Janet needs all expenses for the Show to be turned in by October 15 to have the Jackpot of Gems report available for November 2023. **Steve Norman** stated that working before the announced time on a project when there is a call for volunteers to help load a truck or do some work for the Society is a problem. Volunteers arrive at the appointed time to find the work complete, and some have taken off work to help. There was a consensus that scheduled work should start at the appointed time.

Adjourn: 7:14

## Sparks Library

Thanks photo from Sparks Library for the variety of displays set up by RGMS members at the Sparks-Spanish Springs Library. The displays have featured a variety of rocks and minerals as well as some of the items RGMS members have produced from rocks collected in Nevada. If you have the inclination, it would be a worthwhile expenditure of your time to visit these displays. They change regularly., .





## Kid's Corner - - Petrified Wood

Steve Rose and Steve Norman



Wood that was once alive is now stone! That is a remarkable change from trees living millions of years ago, then dying, and much later, their remains becoming rocks. Researchers believe that for a log or a tree branch to change from plant to stone, the wood needs to be covered by a flood of water and mud. Another way a tree becomes covered occurs when a volcano explodes knocking down trees for miles and covering them with ash and rock debris. Later, some interesting things happen as rain or snow falls into the soil surrounding the wood. An entirely new substance takes the place of what was once wood.<sup>1</sup> Water saturated with chalcedony or opal slowly soaks into the wood, chemically replacing the carbon and other minerals in the wood. Water absorbs some of these minerals in ash or mud over time. The water with trace minerals replaces the wood minerals with chalcedony or opal silicates. This cell-by-cell process happens millions of times until the old tree turns to stone.



This exchange of minerals is known as a pseudomorph.<sup>2</sup> The hydrated type of silica is called opal. Common or precious opal silica occurs in various geological settings but is associated with current or ancient deep-sea sediments.<sup>3</sup> Some of the world's best opals are found in the Virgin Valley in Southern Nevada and in the Northern Nevada Mining District near Denio, Nevada.

Chalcedony is a cryptocrystalline form of silica composed of a very fine crystal structure called *moganite*. Chalcedony material is an uncrystallized form of quartz that is grey, white, or blue. An ancient forest in America's Southwest has completely transformed into chalcedony that today rests on the Arizona desert floor with colorful logs. Some petrified wood is totally remineralized so that geologists can determine the tree's age by counting the tree rings and identifying the type of tree species.<sup>4</sup>

References: <sup>1</sup> *Minerals.net* John Betts. <sup>2</sup> *Minerals and Man*, Cornelius Hurlbut, Jr. Harvard University 1968 page 246. <sup>3</sup> Murata & Nakata, 2017 *European Journal of Mineralogy* 29(3) <sup>4</sup> *Wikipedia*

Images Creative Commons Fair Use by Non-profit

**ALAA Land Use Policy**

1. Adherence to the AFMS Code of Ethics assures compliance with most statutes and regulations governing collecting on public lands and encourages respect for private property rights and the environment. Clubs are urged to read the AFMS Code of Ethics in at least one meeting every year, to publish the Code frequently in the club newsletter, and to compel compliance on club field trips.
2. Individuals and clubs are urged to write their elected representatives and land use management agency supervisors regarding issues of rule making, legislation and enforcement affecting field collecting of minerals and fossils.
3. Individuals and clubs are urged to join and support activities of the American Lands Access Association (ALAA), a sister organization with responsibility for advancing the interests of earth science amateurs with legislatures and land use management agencies.
4. The AFMS will receive a report from ALAA at its annual meeting.
5. The AFMS endorses the principle of multiple use of public lands as a guarantee of continuing recreational opportunities.
6. Wilderness and monument designations are inconsistent with the principle of multiple use. In view of the vast amount of public land already designated as wilderness and monuments, future such designations should be minimal, taking into account the increased demand for recreational opportunities, including rockhounding, created by a growing population.
7. In furtherance of the principle of multiple use, the AFMS believes that laws, regulations and rules established by relevant governmental authorities should be designed to allow freest possible access to all public lands, coupled with minimal restrictions on the recreational collection of minerals, fossils, gemstone materials and other naturally occurring materials.
8. A right to collect minerals and fossils on public lands should be protected by statute.
9. The AFMS urges its members to work with any or all government authorities to achieve a good working relationship in order to improve the public image of recreational collectors.

**AFMS Code of Ethics**

- I will respect both private and public property and will do no collecting on privately owned land without the owner's permission.
- I will keep informed on all laws, regulations or rules governing collecting on public lands and will observe them.
- I will, to the best of my ability, ascertain the boundary lines of property on which I plan to collect.
- I will use no firearms or blasting material in collecting areas.
- I will cause no willful damage to property of any kind—fences, signs, buildings.
- I will leave all gates as found.
- I will build fires in designated or safe places only and will be certain they are completely extinguished before leaving the area.
- I will discard no burning material—matches, cigarettes, etc.
- I will fill all excavation holes, which may be dangerous to livestock.
- I will not contaminate wells, creeks or other water supply.
- I will cause no willful damage to collecting material and will take home only what I can reasonably use.
- I will practice conservation and undertake to utilize fully and well the materials I have collected and will recycle my surplus for the pleasure and benefit of others.
- I will support the rockhound project H.E.L.P. (Help Eliminate Litter Please) and will leave all collecting areas devoid of litter, regardless of how found.
- I will cooperate with field trip leaders and those in designated authority in all collecting areas.
- I will report to my club or Federation officers, Bureau of Land Management, or other authorities, any deposit of petrified wood or other materials on public lands which should be protected for the enjoyment of future generations for public educational and scientific purposes.
- I will appreciate and protect our heritage of natural resources.
- I will observe the "Golden Rule," will use "Good Outdoor Manners" and will at all times conduct myself in a manner which will add to the stature and public image of rockhounds everywhere.



## RGMS Class & Shop Hours for November

Please respond via email to me, Julie Hilsabeck, at [school@renogms.org](mailto:school@renogms.org), after you receive the blast for the November classes if you want any of them. Please indicate which class date and time you want. Many of the classes are limited to a maximum of 4 students. If the day of the week says Tuesdays (for example), the plural means the class lasts all month. Look for a blast with the November information in the all/member email on the LAST Tuesday evening of October.

**Advanced Silver Fabrication** \$22.50 per class  
Thursdays, 6:00 pm to 9:00 pm

**Beading** \$20.00

Sunday 11/19 10:00 am to 2:00 pm , Project TBA.  
Materials should be available locally from The Bead Gallery or The Bead Shop, List available a Meeting 11/1.

**Beginning Lapidary** \$60.00

See blast before meeting.

**Beginning Silver Fabrication**

\$120.00 - More info in blast

Tuesdays 6:00pm to 9:00pm  
Thursdays 11:00am to 2:00 pm

**Lost Wax Carving for Casting** See blast before meeting

**Mineral Identification** \$60.00 plus \$25 kit fee  
Class planned for November. More info in blast.

**Open House** \$7.50/hour of use

**Mondays** 11:00am to 9:00 pm

**Thursdays** 11:00 am to 2:00 pm

**Slab Saw Use** \$60.00

**Tuesdays** 6:30pm to 8:30pm

**Tumbling** \$60.00

**Tuesdays** 6:30 pm to 8:30 pm.

**Wire Wrapping** \$90

**Thursdays** 6pm-9pm



# THANKSGIVING



The apples in the bucket could just as well be rocks gathered on a field trip, as could the pumpkins sitting beside the bucket. That would indeed be something to be thankful for among our many blessings—one of which is the Reno Gem and Mineral Society.

Images from Creative Commons, fair use by non-profit



## CFMS/AFMS Shows November-2023-May, 2024

Additional information is available on the CFMS website, [cfmsinc.org/shows](http://cfmsinc.org/shows)

### November 3, 4 & 5, 2023 – Eureka, CA

Humboldt Gem & Mineral Society  
Humboldt Gem & Mineral Society 68th Annual Show  
3750 Harris St., Eureka, CA 95503

### November 4, 2023 – Lake Elsinore, CA

Lake Elsinore Gem & Mineral Society  
32097 Corydon Rd., Lake Elsinore, CA 92530  
Contact: (909) 208-6956, [berylman50@aol.com](mailto:berylman50@aol.com)

### November 4-5, 2023 – Concord, CA

Contra Costa Mineral & Gem Society  
Centre Concord, 5298 Clayton Road, Concord, CA 94521

Contact: [mike@diablorocks.com](mailto:mike@diablorocks.com)

Website: [Contra Costa Mineral and Gem Society | Facebook](#)

### November 4-5, 2023, Ridgecrest. CA

Indian Wells Gem & Mineral Society  
Desert Empire Fairgrounds, 520 S. Richmond Rd.,  
Ridgecrest, CA 93555  
Indian Wells Gem & Mineral 67th Gem & Mineral Show.  
Located in Ridgecrest, CA. Contact: (760) 375-7905,  
[iwgmjfrocks@gmail.com](mailto:iwgmjfrocks@gmail.com)

### November 19 – 20, 2023 – Lakeside, CA

El Cajon Valley Gem and Mineral Society  
12584 Mapleview St., Lakeside CA 92040  
Contact: (619) 277-4981, [ecvngms@gmail.com](mailto:ecvngms@gmail.com)  
Website: <http://ecvngms.org>

### December 2-3, 2023 – Barstow, CA

Mojave Desert Gem and Mineral Society  
Cora Harper Community/Fitness Center  
841 Barstow Road, Barstow, CA 92311  
Contact: John Printz (760) 979-6138, [MDGMSsecretary@gmail.com](mailto:MDGMSsecretary@gmail.com)  
Website: <http://www.mdgms.net>

2024

### January 20-21, 2024 – Exeter, CA

Tule Gem and Mineral Society  
Exeter Veterans Memorial Building, 324 North Kaweah  
Ave., Exeter, CA 93221  
Contact: Gayle Bingaman, Show Chairperson, (559)  
802-6029, [bandgbing@aol.com](mailto:bandgbing@aol.com)  
Website: <http://www.tulegem.com>

### February 17-18, 2024 – Antioch, CA

Antioch Lapidary Club  
Contra Costa County Fairgrounds, 1201 West 10th  
Street, Antioch, CA  
Contact: (510) 693-9075, [kellyplumb900@yahoo.com](mailto:kellyplumb900@yahoo.com)  
Website: <http://antiochlapidaryclub.com>

### February 24-25, 2024 – Vallejo, CA

Vallejo Gem and Mineral Society  
Solano County Fairgrounds, McCormack Hall,  
900 Fairgrounds Drive, Vallejo, CA 94589  
Contact: (415) 254-1506,  
[dduhonvgms@gmail.com](mailto:dduhonvgms@gmail.com)  
Website: <https://vjgems.co>

### March 2-3, 2024 – Ventura, CA

Ventura Gem & Mineral Society  
Ventura Co. Fairgrounds, 10 W. Harbor Blvd.,  
Ventura CA  
Contact: (805) 312-8467, [info@vgms.org](mailto:info@vgms.org)  
Website: <http://www.vgms.org>

### March 23-24, 2024 – Angels Camp, CA

Calaveras Gem and Mineral Society  
2465 Gun Club Rd., Angels Camp CA 95222  
Contact: (209) 736-4892, [dbrooks49@att.net](mailto:dbrooks49@att.net)  
Website: <http://CalaverasGemandMineral.net>

### May 4-5, 2024 – Lancaster

Antelope Valley Gem & Mineral Club  
2551 W Ave. H, Lancaster, CA 93536  
Contact: [marylandoriele@gmail.com](mailto:marylandoriele@gmail.com)

## Classes Offered by RGMS

Advanced Silver Fabrication  
Beginning Silver Fabrication  
Beginning Lapidary  
Intermediate Lapidary  
Beading and Bead Weaving  
Casting"  
Cold Connections  
Etching on Copper  
Jewelry 101  
Lost Wax Carving  
Mineral Identification  
Slab Saw Use:  
Tumbling:  
Wire wrapping: ...

Enameling (future)  
Faceting (future)  
Intarsia (future)



## **Christmas Party, 2023**

**Debbie Bush, Social Director**



The Jackpot of Gems is barely over and suddenly we are talking about the Christmas Party! (Which is coming fast).

Date: December 2, 2023

Time: 5-8pm

Place: Lazy 5 Cottonwood Room 7100 Pyramid Way Sparks

This year we are changing it up a little. Instead of each person bringing a \$20.00 gift, we are having raffle prizes and 2-3 big drawings for larger items—one of which is a new gas grill.

The raffle prizes will have bags or boxes in front of each item so you may choose which gift you would like to put your tickets in for. These are not the Big drawings—everyone will be in those.

Each person pays \$10.00 and receives 15 drawing tickets to disperse however they want for the raffle drawings.

It is still a potluck so we ask you to bring a main dish, side dish or dessert. Once you decide what you would like to bring, please email me:

[Social@renogms.org](mailto:Social@renogms.org)

There will be more information at the November 1<sup>st</sup> meeting. Unfortunately, that is the only meeting left before the party as the Christmas Party is before the December meeting.

So it is **IMPORTANT** that you email me or sign up at the November meeting if you are coming to the party. Money will be collected and tickets given out at the door but we need to know a number so we can plan food, prizes, etc.

As always, we need set up and tear down volunteers. Also, donations for the Christmas raffle or door prizes. They do not need to be rocks or jewelry. If you have a new item to donate let me know.

I hope to see a lot of you there!



**Officers**

<b>President:</b>	Dean Sizemore	<a href="mailto:President@renogms.org">President@renogms.org</a>
<b>Vice President:</b>	Steven Smith	<a href="mailto:Vicepresident@renogms.org">Vicepresident@renogms.org</a>
<b>Secretary:</b>	Steve Norman	<a href="mailto:secretary@renogms.org">secretary@renogms.org</a>
<b>Asst. Secretary:</b>	Suzanne Webb	<a href="mailto:assistantsecretary@renogms.org">assistantsecretary@renogms.org</a>
<b>Treasurer:</b>	Janet Longueira	<a href="mailto:treasurer@renogms.org">treasurer@renogms.org</a>
<b>Asst. Treasurer:</b>	Robyn Howard	<a href="mailto:assistanttreasurer@renogms.org">assistanttreasurer@renogms.org</a>
<b>Past President</b>	Tom Nichols	<a href="mailto:pastpresident@renogms.org">pastpresident@renogms.org</a>

**Board Members at Large**

Lori Connel	Albie Longueira	Theresa Langhans
Stephanie Leonard	Jim Wellker	Denise Sizemore
	Tim Steeper	

**Commission Directors**

<b>ALAA rep</b>	<b>Available</b>	<a href="mailto:alaa@renogms.org">alaa@renogms.org</a>
<b>Bulletin Editor:</b>	Suzanne Webb	<a href="mailto:conglomerate@renogms.org">conglomerate@renogms.org</a>
<b>Ass't Editor</b>	Karen Boldi	
<b>CFMS &amp; AFMS</b>	Suzanne Webb	<a href="mailto:cfms@renogms.org">cfms@renogms.org</a>
<b>Compliance Officer</b>	Ana John	
<b>Craft Fairs</b>	Theresa Langhans	<a href="mailto:craftfair@renogms.org">craftfair@renogms.org</a>
<b>Door Prize Coordinator</b>	Denise Sizemore	<a href="mailto:doorprizes@renogms.org">doorprizes@renogms.org</a>
<b>Facility</b>	Terry Bush	<a href="mailto:maintenance@renogms.org">maintenance@renogms.org</a>
<b>Facebook</b>	Sven-Erik Sander	<a href="mailto:socialmedia@renogms.org">socialmedia@renogms.org</a>
<b>Field Trips:</b>	Hilary Loupee et al	<a href="mailto:fieldtrip@renogms.org">fieldtrip@renogms.org</a>
<b>Historian:</b>	Philipp Weirauch	<a href="mailto:historian@renogms.org">historian@renogms.org</a>
<b>Jackpot of Gems</b>	Daniel Ellis	<a href="mailto:jpoq@renogms.org">jpoq@renogms.org</a>
<b>Ass't JPOG</b>	Steve Norman	
<b>Librarian</b>	April Young	<a href="mailto:library@renogms.org">library@renogms.org</a>
<b>LLC Manager</b>	Debbie Bush	<a href="mailto:llc@renogms.org">llc@renogms.org</a>
<b>Membership:</b>	Lynda Traves	<a href="mailto:membership@renogms.org">membership@renogms.org</a>
<b>Photographer:</b>	Steven Smith	<a href="mailto:photographer@renogms.org">photographer@renogms.org</a>
<b>Public Relations:</b>	<b>Available</b>	<a href="mailto:publicity@renogms.org">publicity@renogms.org</a>
<b>School:</b>	Julie Hilsabeck	<a href="mailto:school@renogms.org">school@renogms.org</a>
<b>Safety Coordinator</b>	Spencer Ennis	
<b>Security</b>	<b>Available</b>	<a href="mailto:security@renogms.org">security@renogms.org</a>
<b>Shop:</b>	Patrick Davis	
<b>Social:</b>	Debbie Bush	<a href="mailto:social@renogms.org">social@renogms.org</a>
<b>Sunshine:</b>	Joanne Sworthout	<a href="mailto:sunshine@renogms.org">sunshine@renogms.org</a>
<b>Tech Director</b>	Tom Nichols (temp)	<a href="mailto:tech@renogms.org">tech@renogms.org</a>
<b>Volunteers</b>	Wendy Kazas	

## ***Volunteer Page***

A new feature in the *Conglomerate*, this space will feature those members who are not officers or directors but who regularly volunteer their time to help RGMS function in a number of different and valuable ways, or sometimes in addition to serving as an officer or director. Please thank them for their service if you see them at the Rock Building or at the meeting. You will notice that some members serve in more than one capacity—for example, Steve Norman has 3 jobs—count ‘em. A number of others are doing 2. Think you might find time to do just one job? There are several available.

Used Equip, Sale Coord.  
 Gen. Mtg. Guest Greeter  
 Gen. Mtg Door Prize Coord  
 Assistant Door Prize Coord.  
 Educational Outreach  
 Future Rockhounds Advisor  
 JPOG Silent Auction  
 Facility Expansion  
 JPOG Dealer Chair  
 Rock Bldg Leasing Mgr  
 Safety Officer

Patrick Davis & Committee  
 Joanne Sworthout  
 Denise Sizemore,  
 Lori Connel  
 Steve Norman  
 Steve Norman  
 Renée Samuels  
 Patrick Davis  
 Terry Bush  
 Juliet Hitchcock  
 Spencer Ennis

### Instructors (Alphabetical by class)

*Bead weaving:*  
*Casting:*  
*Etching*  
*Jewelry 101 &*  
*Cold Connections*  
*Lapidary*

*Lost Wax Carving*  
*Mineral ID*  
*Silver Fabrication (Adv.)*  
*Silver Fabrication (Beg.)*  
*Slab saw*  
*Tumbling*  
*Wire Art*

Sue Webb  
 Spencer Ennis  
 Irene Comstock  
 Robyn Howard  
 “  
 Julie Hilsabeck  
 Barbara Hartman  
 Tim Steeper  
 Tom Calhoun/Webb Varnum  
 Jill Atkins  
 Spencer Ennis  
 Patrick Davis  
 Janet & Albie Longueira  
 Ginger Ragazzi